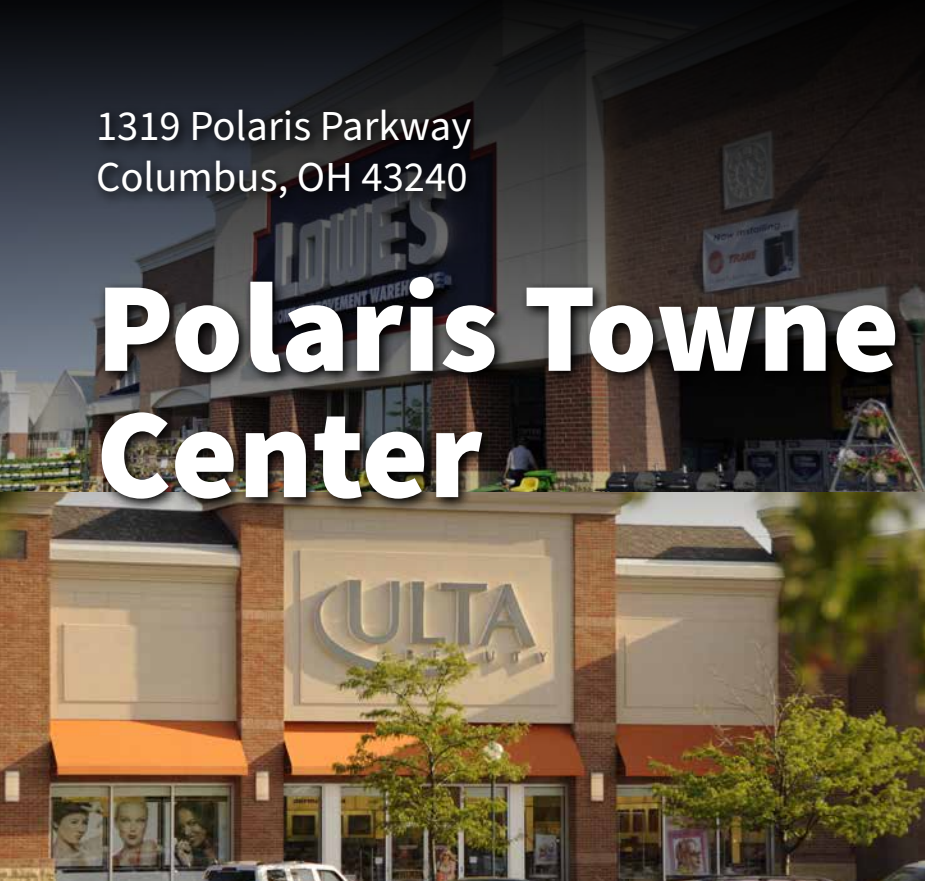


1319 Polaris Parkway
Columbus, OH 43240

Polaris Towne Center

RETAIL SPACE FOR LEASE

For information, please visit
www.pinetree.com/polaris-towne-center



FEATURES

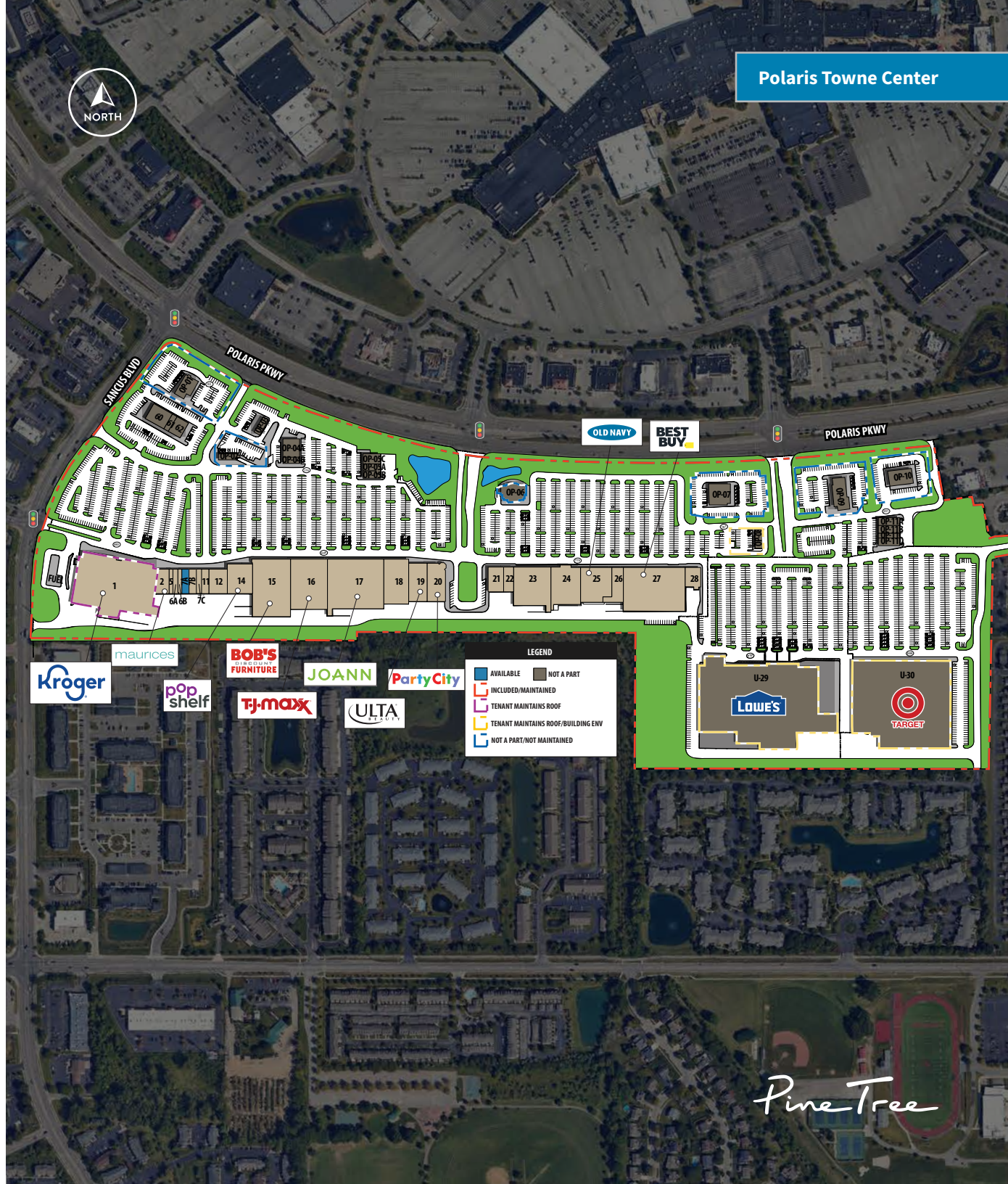
- Polaris Towne Center is a 730,131-square-foot retail property located in Franklin County at 1319 Polaris Parkway in Columbus, Ohio.
- The dominant power center in the fast-growing northern Columbus submarket.
- Located across from Polaris Fashion Mall and offers easy access from I-71.



View more storefront and aerial photos at:
www.pinetree.com/polaris-towne-center

Tenant Roster

UNIT	TENANT	SF
1	Kroger	68,411
2	Maurice's	5,300
5	GNC	1,500
6A	UPaint Pottery Studio	1,957
6B	Waxspot	1,532
7A	Available	2,486
7B	Visionworks	3,316
7C	Crumbl Cookies	1,984
11	Torrid	3,000
12	Lane Bryant/Cacique	7,500
14	PopShelf	12,000
15	Bob's Discount Furniture	35,100
16	TJ Maxx	30,000
17	JoAnn	45,650
18	Sierra	18,067
19	Ulta Beauty	11,955
20	Party City	11,367
21	J Crew Factory	6,000
22	Bath & Body Works	4,000
23	OfficeMax	23,500
24	World Market	18,300
25	Old Navy	17,700
26	Five Below	7,500
27	Best Buy	45,000
28	Kidstrong	4,800



Polaris Towne Center